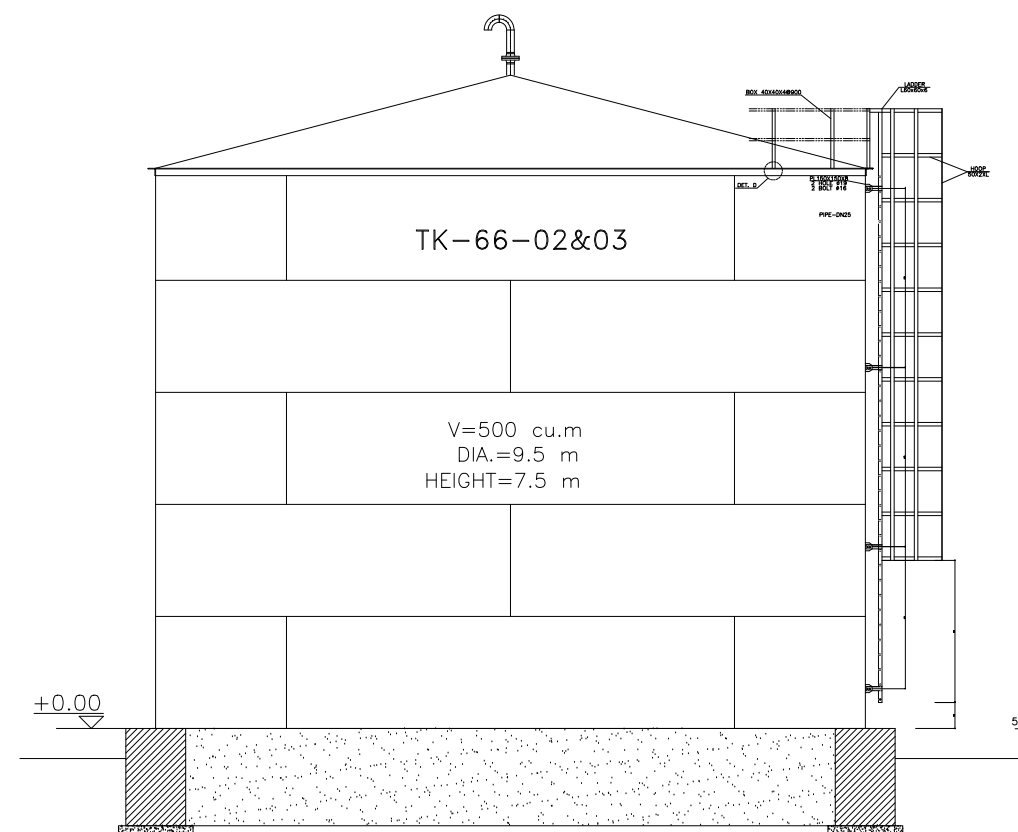
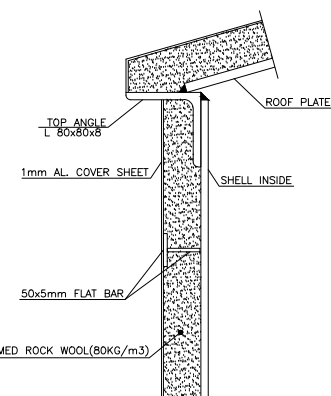


TANK SHELL DETAILS
SCALE 1:50

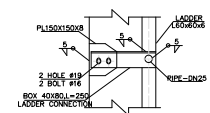


TANK LADDER & SAFEGUARD DETAILS
SCALE 1:50

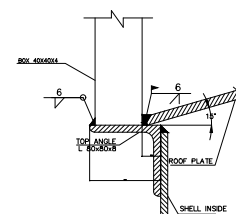
MAIN MATERIAL SPECIFICATION				I S S U E S			
SHELL	A 283 C	Int / Ext. Bolt	A193 Gr.B7	REV.	DATE	COPY	ISSUED TO
ANNUAL PLATE	A 283 C	Int / Ext. Nut	A194 Gr.2H		1403.11.30	S.C.	KURDISTAN BAREZ TIRE CO
ROOF & BOTTOM	A 283 C	ELBOW	A234 Gr WPR				
FLANGES(FORGED)	A 105	STRUCT. PARTS	DIN S.T.N.D. SECTIONS				
FLANGE-PLATE	SL37-2	REINF. PAD	A 283 C				
NOZZLE-PIPE	A 106 Gr B	Earthing Lug.	SL37-2				
NOZZLE-PLATE	A 283 C						
PIPE-INTERNAL	A 106 Gr B						
COUPLING	A 105						
GASKETS	RCAF						



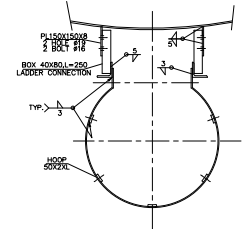
TANK INSULATION DETAIL
NTS.



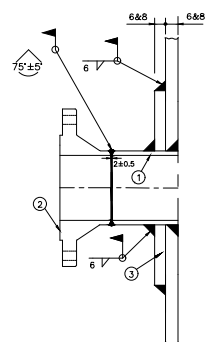
LADDER CONNECTION
NTS.



DETAIL "A"
NTS.



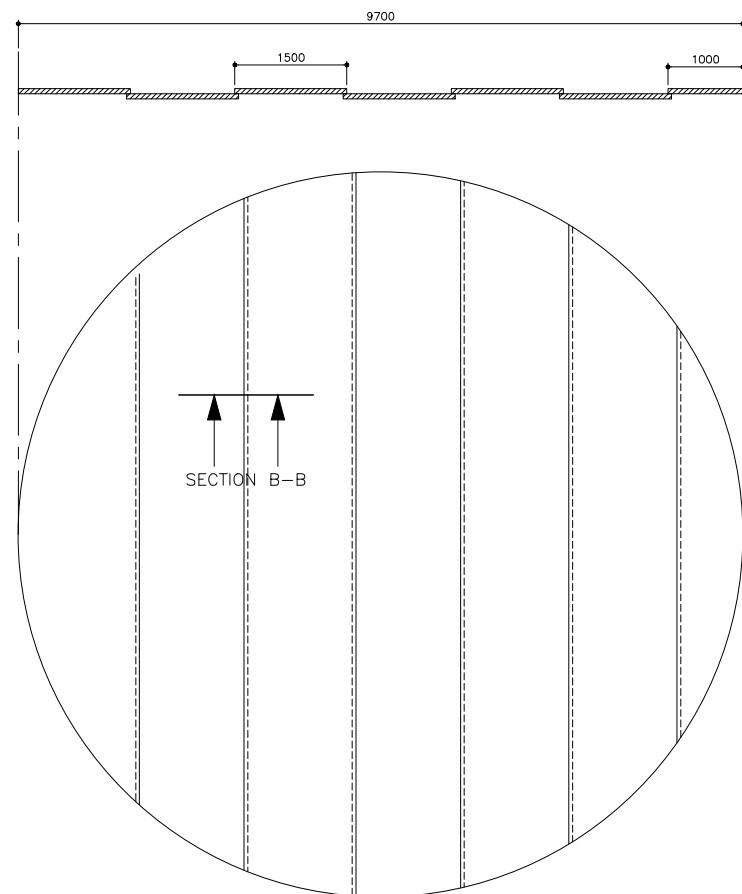
LADDER SAFEGUARD
NTS.



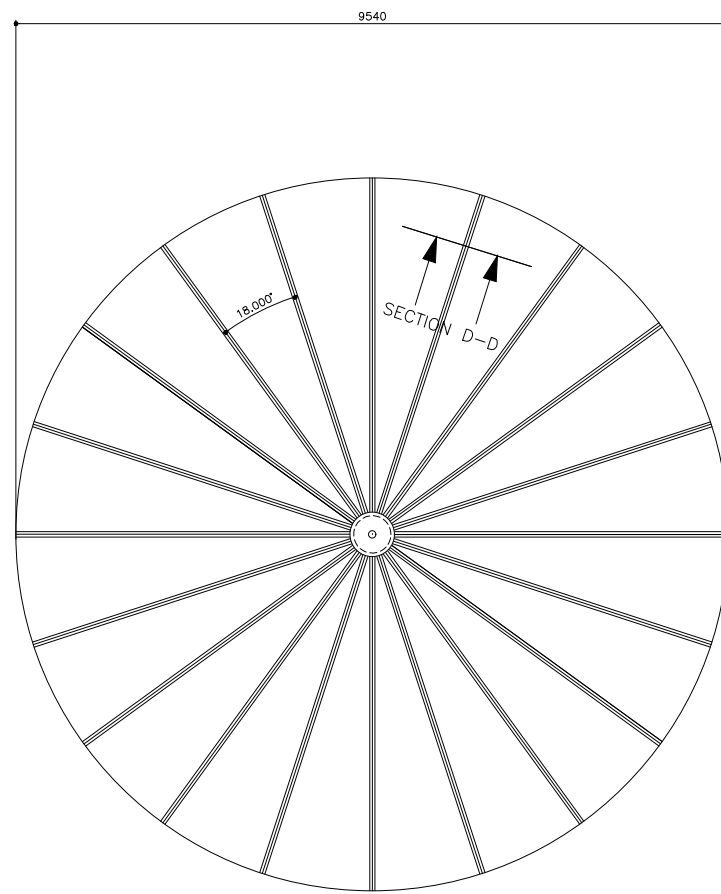
NOZZLE INSTALLATION DETAIL
NTS.

DIMENSIONS OF NOZZLE REINFORCING PLATE					REMARKS
NOZZLE SIZE	PIPE (mm)	D (mm)	J (mm)	thc. (mm)	
DN80	88.90	265	175	6	—
DN100	114.30	305	175	6	—
DN125	141.30	400	200	6	—
DN150	168.30	500	200	6	—
DN200	219.10	600	200	6	—
DN250	273.00	600	200	6	—
DN300	324.00	700	250	8	—
DN350	355.00	800	300	8	—
DN400	406.00	800	300	8	—

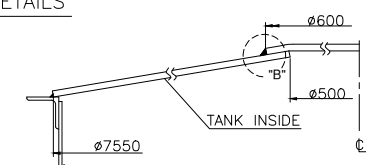
- ① NECK PIPE(C.S.SCH.40)
- ② FLANGE PN 10 R.F. WELD NECK (DIN 2632)
- ③ NOZZLE REINFORCING PLATE



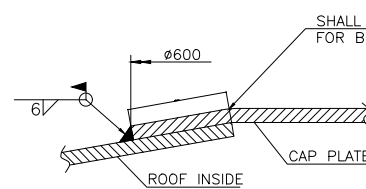
TK-66-02&03 BOTTOM PLATE DETAIL
SCALE 1:50



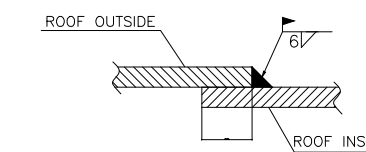
TK-66-02&03 ROOF PLATE DETAIL
SCALE 1:50



ROOF VIEW
NTS.



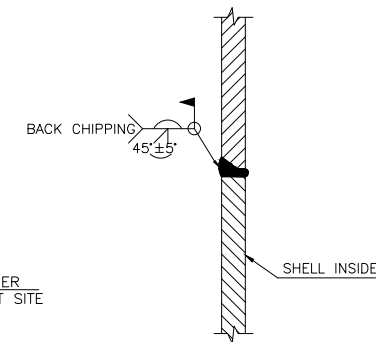
DETAIL B
NTS.



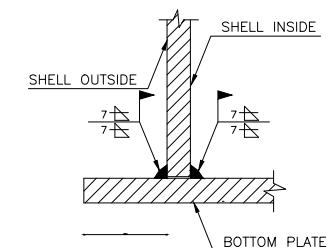
SECTION D-D



SECTION B-B
NTS.



DETAIL "B"
NTS.



DETAIL "C"
NTS.

REV.	NEW PROJECT NUMBER	DATE	R E V I S I O N		DRAWN C H E D' APP'D
 Andishehvazaran Sanat			KURDISTAN BAREZ TIRE CO. RADIAL TIRE MANUFACTURING PLANT--SANANDAJ GAS OIL TANKS (EXTENSION)		
SCALE	AS SHOWN	SECTION & SHELL DETAILS		PROJECT NUMBER 140267	
DRAWN	F.A.			DRAWING NUMBER REV.	
CHECKED	B.A.			1.663411	
APPROVED	S.J.				
DATE	1403.08.19				
CAD FILE	67663411			CLIENT'S DRAWING NUMBER	